



by Nora Catlin
nora.catlin@cornell.edu

INSV on Coleus

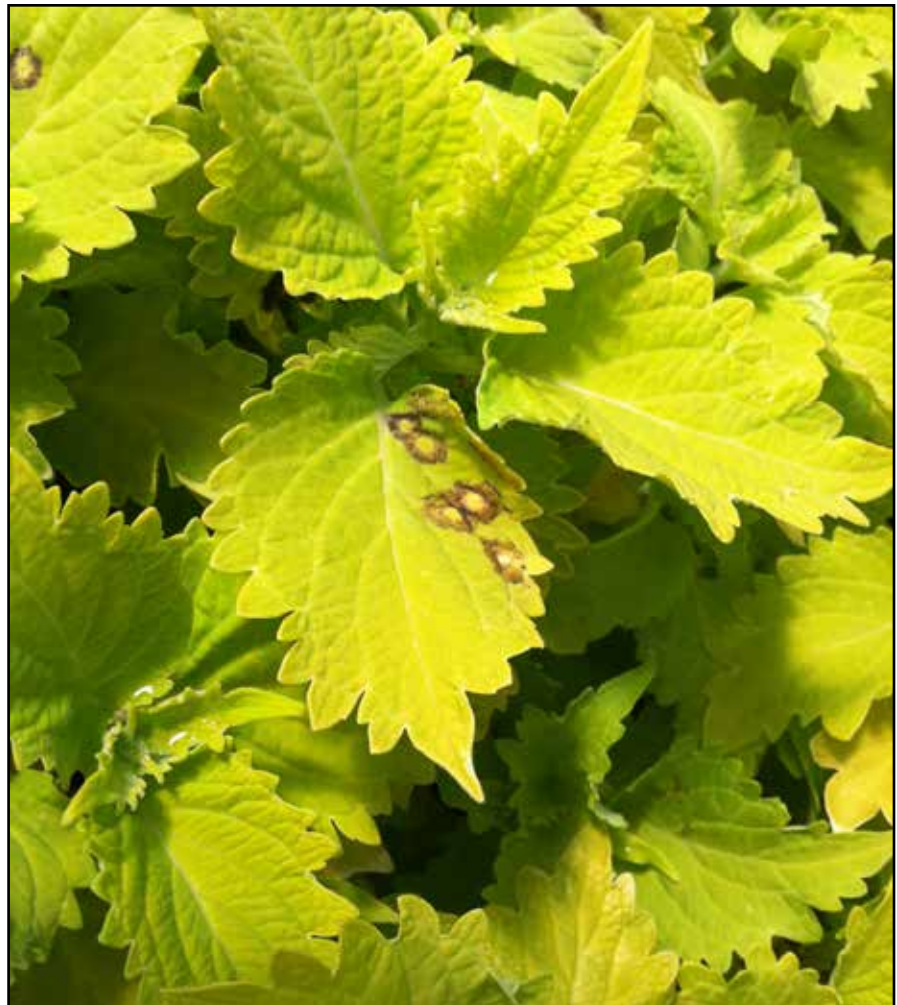
Impatiens necrotic spot virus (INSV) causes spots, ringspots, arc-shaped lesions, and irregular line patterns on coleus.



2014 Sponsor

On a recent greenhouse visit I noticed some suspicious leaf spots on coleus plants. Ring spots, arc-shaped lesions, and irregular line patterns were observed. These symptoms were most striking and easiest to see on the cultivars with light green or chartreuse leaves, though spots were also evident on other dark-leaved cultivars. When samples were tested the plants were confirmed to have *Impatiens necrotic spot virus* (INSV).

Be cautious when scouting, occasionally INSV symptoms can sometimes be mistaken for other foliar leaf spots on coleus. INSV has a wide host range, so it's important to carefully scout all your plants for symptoms. Keep in mind that while INSV causes ring- or arc-shaped lesions on coleus and other plants,



Ringspots caused by INSV.

e-GRO Alert

www.e-gro.org

CONTRIBUTORS

Dr. Nora Catlin
Floriculture Specialist
Cornell Cooperative Extension -
Suffolk County
nora.catlin@cornell.edu

Dr. Kristin Getter
Floriculture Outreach Specialist
Michigan State University
getterk@msu.edu

Dan Gilrein
Entomology Specialist
Cornell Cooperative Extension -
Suffolk County
dog1@cornell.edu

Dr. Brian Krug
Floriculture Ext. Specialist
Univ. New Hampshire
brian.krug@unh.edu

Dr. Joyce Latimer
Floriculture Extension & Research
Virginia Tech
jlatime@vt.edu

Dr. Roberto Lopez
Floriculture Extension Specialist &
Research
Purdue University
rglopez@purdue.edu

Dr. Paul Thomas
Floriculture Extension & Research
University of Georgia
pathomas@uga.edu

Dr. Brian Whipker
Floriculture Extension & Research
NC State University
bwhipker@ncsu.edu

Copyright © 2014

*Where trade names, proprietary products,
or specific equipment are listed, no discrimination is
intended and no endorsement, guarantee or warranty is
implied by the authors, universities or associations.*



Ringspots caused by INSV.



Ringspots caused by INSV.

Cooperating Universities



Cornell University
Cooperative Extension
of Suffolk County



THE UNIVERSITY OF GEORGIA
**COOPERATIVE
EXTENSION**

College of Agricultural and Environmental Sciences
College of Family and Consumer Sciences

NC STATE UNIVERSITY
Floriculture



**In cooperation with our
local and state greenhouse
organizations**



it can also cause symptoms of leaf mottle, stem or petiole lesions, irregularly shaped necrotic lesions, or stunt on other plants. As always, if you are uncertain contact your local extension specialist or diagnostic laboratory for assistance.

Remember that INSV is vectored by thrips. Once you've identified that INSV is in the house you need to step up your thrips management immediately. See Dan Gilrein's recent e-Gro Alert on thrips and thrips management: <http://e-gro.org/pdf/thrips.pdf>.

You should also immediately discard heavily infected plants to eliminate these plants as a source of inoculum. Some weeds can also be hosts of INSV and they can also harbor thrips, so make sure to manage the weeds inside your greenhouse as well as around the perimeter.

This virus can also be spread through propagation, so be especially careful and scout your stock plants for symptoms and remove INSV-infected plants from propagation.



Ringspots and line patterns caused by INSV.



Ringspots caused by INSV.

Ringspots caused by INSV.



Subscribe to e-GRO Alert
Text "egro" to 22828
or
visit e-GRO.org